



Firebird 2.5 Quick Start Guide

IBPhoenix Editors
Firebird Project members

26 September 2011, document version 4.4 — covers Firebird 2.5 and 2.5.1

Table of Contents

About this guide	3
The Firebird licenses	3
Classic, SuperClassic or Superserver?	4
Installation packages	5
Embedded Server for Windows	5
What is in the kit?	5
Default disk locations	6
Linux	6
Windows	7
Installing Firebird	8
Installing the Firebird server	8
Installing multiple servers	9
Testing your installation	10
Performing a client-only install	13
Server configuration and management	14
User management: gsec	14
Security	17
Windows Control Panel applets	20
Administration tools	21
Working with databases	21
Connection strings	21
Connecting to an existing database	23
Creating a database using isql	24
Firebird SQL	25
Protecting your data	29
Backup	29
How to corrupt a database	30
How to get help	31
How to give help	32
The Firebird Project	32
Appendix A: Firebird server architectures	33
Appendix B: Document History	35
Appendix C: License notice	40
Alphabetical index	41

About this guide

The *Firebird Quick Start Guide* is an introduction for the complete newcomer to a few essentials for getting off to a quick start with a Firebird binary kit. The guide first saw the light as Chapter 1 of the *Using Firebird* manual, sold on CD by [IBPhoenix](#). Later it was published separately on the Internet. In June 2004, IBPhoenix donated it to the Firebird Project. Since then it is maintained, and regularly updated, by members of the Firebird documentation project.

Important

Before you read on, verify that this guide matches your Firebird version. This guide covers versions 2.5 and 2.5.1. For all other Firebird versions, get the corresponding Quick Start Guide at <http://www.firebirdsql.org/en/documentation/>.

The Firebird licenses

Firebird is a free, open-source database management system, but “free” does not mean that everything is permitted. The use of Firebird is governed by two licenses: the IPL (InterBase Public License) and the IDPL (Initial Developer’s Public License). The first one covers the parts of the source code that were inherited from InterBase; the second applies to the additions and improvements made by the Firebird Project. Both licenses offer similar rights and restrictions. In short:

- Use of the software is free, even for commercial purposes. You may also redistribute the software, separately or with a product of your own, but you may not claim ownership or credit for it. Any license notices included with Firebird must remain intact.
- You may modify and recompile the Firebird source code or parts of it. You may distribute such modified versions, but if you do so, you *must* document your modifications and make them publicly available, at no cost, under the same license as the original code.
- You may include Firebird source code (modified or not) in a larger work and distribute that larger work, in source and/or compiled form, under a license of your own choosing. You need not publicize the source code for the entire larger work, but you *must* fulfill the license conditions for the parts that were taken from Firebird, whether they were modified or not.

Please notice that the above is a simplified overview. Only the original license texts are legally binding. You can find them here:

<http://www.firebirdsql.org/ipl/> (IPL)

<http://www.firebirdsql.org/idpl/> (IDPL)

Classic, SuperClassic or Superserver?

Firebird servers come in two flavours, called *architectures*: Classic Server and Superserver. Since Firebird 2.5, Classic Server can operate in two modes: “traditional” Classic and SuperClassic, giving a total of 3 models. Which one should you choose? The most important differences are listed below. In the vast majority of cases, all three models perform equally well and offer (almost) the same possibilities.

Processes

Classic uses a separate process for each connection; SuperClassic and Superserver use a single process. Thus, if a Classic server process crashes, the other connections remain unaffected. With SuperClassic and Superserver, a crash take down all the connections.

Guardian

Superserver can run under the control of the Firebird Guardian, which automatically restarts it in case of a crash. SuperClassic only offers the Guardian option under Linux. Classic doesn't offer it at all.

Resources

Being single-process, SuperClassic and Superserver use system resources more efficiently than Classic if the number of simultaneous connections grows. Superserver is the most efficient of the three, because it also has a shared cache space.

Local connections

Classic and SuperClassic offer an “embedded” local connection mode on Linux which is very fast, but not as secure as a regular network connection. On Windows, a separate [Embedded Server](#) is available which is even less secure, but can be very practical if you want to ship Firebird with your applications.

Simultaneous connections

Only Classic and SuperClassic allow simultaneous connections to a database from the regular server and one or more embedded servers. Thus, if you use the Windows Embedded Server, it may be advantageous to have Classic or SuperClassic as your regular server.

Multiprocessing

On Windows, Superserver defaults to using only the first processor or core in your computer. To make it use all the available CPU power, the `CpuAffinityMask` parameter in `firebird.conf` must be edited. All other servers (including Superserver for Linux) support multiprocessing out of the box and ignore `CpuAffinityMask`.

As you can see, none of the three models outshines the other two on all fronts. If you're not sure which is best for you, SuperClassic may be a good pick on 64-bit systems. Make sure you install the 64-bits version, though. On 32-bits systems, SuperClassic will be the first to run out of memory under high load. Superserver, with its shared cache space, and Classic, with its separate processes, perform better there.

Notice that you can always switch to another model later; your applications and databases will keep functioning like before. The differences are in the servers, not in the databases.

For a more detailed look at the various server models, consult the appendix [Firebird server architectures](#).

Installation packages

For Linux, Superserver download packages start with `FirebirdSS`, Classic/SuperClassic packages with `FirebirdCS`. The default run mode for Classic/SuperClassic installations is traditional, multiprocess Classic. To switch to SuperClassic, run the script `changeMultiConnectMode.sh` and answer “**thread**” at the prompt (for *multithreaded*). The script is located in the `bin` subdirectory of your Firebird installation.

For Windows, there is a combined installation package; you choose the architecture (Superserver or Classic) on one of the first screens. If you choose Classic, you can enable SuperClassic mode a couple of screens later.

Embedded Server for Windows

On Windows platforms, the *Embedded Server* comes in a separate download package. It contains a client and server combined into one DLL for ease of deployment. Whilst very practical, it lacks most of Firebird's usual security features (much more so than Linux's embedded local access). For more information on Windows Embedded Server, consult the *Clients and Servers* chapter in *Using Firebird*:

<http://www.firebirdsql.org/manual/ufb-cs-embedded.html> (HTML)

[http://www.firebirdsql.org/pdfmanual/Using-Firebird_\(wip\).pdf](http://www.firebirdsql.org/pdfmanual/Using-Firebird_(wip).pdf) (PDF)

Please notice! At the time of this writing, the information at the URLs above is **not yet up to date** with the situation in Firebird 2.5. The most important change is:

- Windows Embedded now contains a SuperClassic instead of a SuperServer engine. File locks are shared, so a database can be accessed by one or more Embedded servers and a regular Classic or SuperClassic server at the same time.

Consult the Firebird 2.5 Release Notes for full details.

What is in the kit?

All of the download kits contain all the components needed to install the Firebird server:

- The Firebird server executable.
- One or more client libraries.
- The command-line tools.
- The standard user-defined function libraries.
- A sample database.
- The C header files (not needed by beginners).
- Release notes – *essential reading!*

Default disk locations

Linux

The following table shows the default component locations of a Firebird installation on Linux. Some of the locations may be different on other Unix-like systems.

Table 1. Firebird 2.5 component locations on Linux

Component	File Name	Default Location
Installation directory (referred to hereafter as <InstallDir>)	—	/opt/firebird (may vary per distribution)
Configuration files	firebird.conf, aliases.conf, etc.	<InstallDir>
Release Notes and other documentation	Various files	<InstallDir>/doc
Firebird server	fbserver (SS), fb_smp_server (SC) or fb_inet_server (CS)	<InstallDir>/bin
Command-line tools	isql, gbak, nbackup, gsec, gfix, gstat, etc.	<InstallDir>/bin
Sample database	employee.fdb	<InstallDir>/examples/empbuild
UDF libraries	ib_udf.so, fbudf.so	<InstallDir>/UDF
Additional server-side libraries	libicu*.so, libib_util.so	<InstallDir>/lib
Client libraries	libfbclient.so.2.5.n (network client) libfbembed.so.2.5.n (local client with embedded engine, Classic/SuperClassic only) The usual symlinks (*.so.2, *.so) are created. Legacy libgds.* symlinks are also installed.	/usr/lib[64] (actually, the real stuff is in <InstallDir>/lib, but you should use the links in /usr/lib[64])

Windows

In the table below, <ProgramDir> refers to the Windows programs folder. This is usually “C:\Program Files” but may also be a different path, e.g. “D:\Programmi”. Likewise, <SystemDir> refers to the Windows system directory. Be sure to read the notes below the table, especially if you're running Firebird on a 64-bit Windows system.

Table 2. Firebird 2.5 component locations on Windows

Component	File Name	Default Location
Installation directory (referred to hereafter as <InstallDir>)	—	<ProgramDir>\Firebird\ Firebird_2_5
Configuration files	firebird.conf, aliases.conf, etc.	<InstallDir>
Release Notes and other documentation	Various files	<InstallDir>\doc
Firebird server	fbserver.exe (SS) or fb_inet_server.exe (CS/SC)	<InstallDir>\bin
Command-line tools	isql.exe, gbak.exe, nbackup.exe, gsec.exe, gfix.exe, gstat.exe, etc.	<InstallDir>\bin
Sample database	employee.fdb	<InstallDir>\examples\ empbuild
User-defined function (UDF) libraries	ib_udf.dll, fbudf.dll	<InstallDir>\UDF
Additional server-side libraries	icu*.dll, ib_util.dll	<InstallDir>\bin
Client libraries	fbclient.dll (with an optional gds32.dll, to support legacy apps)	<InstallDir>\bin (with an optional copy in <SystemDir> – see note below table)

The Windows system directory

The exact path to the Windows System directory depends on your Windows version. Typical locations on 32-bit systems are:

- for Windows 95/98/ME: C:\Windows\System
- for Windows NT/2000: C:\WINNT\System32
- for Windows XP: C:\Windows\System32

For 64-bit systems, read the next note.

Important notice for 64-bit Windows users

On 64-bit Windows systems, the “Program Files” directory is reserved for 64-bit programs. If you try to install a 32-bit application into that folder, it will be auto-redirected to a directory which – in English versions – is called “Program Files (x86)”. In other language versions the name may be different.

In the same vein, the `System32` directory is reserved for 64-bit libraries. 32-bit libraries go into `SysWOW64`. That's right: 64-bit libraries are in `System32`, 32-bit libraries in `SysWOW64`.

If you're not aware of this, you may have a hard time locating your 32-bit Firebird components on a 64-bit Windows system.

(Incidentally, *WOW* stands for *Windows on Windows*. Now you can also work out what *LOL* means.)

Installing Firebird

The instructions given below for the installation of Firebird on Windows and Linux should be sufficient for the vast majority of cases. However, if you experience problems or if you have special needs not covered here, be sure to read the *INSTALLATION NOTES* chapter in the Release Notes. This is especially important if you are upgrading from a previous version or if there are remnants of an old (and maybe long gone) InterBase or Firebird installation floating around your system (DLLs, Registry entries, environment variables...)

Installing the Firebird server

Installation drives

Firebird server – and any databases you create or connect to – must reside on a hard drive that is physically connected to the host machine. You cannot locate components of the server, or any database, on a mapped drive, a filesystem share or a network filesystem.

Note

You can mount a read-only database on a CD-ROM drive but you cannot run Firebird server from one.

Installation script or program

Although it is possible to install Firebird by a filesystem copying method – such as “untarring” a snapshot build or decompressing a structured `.zip` archive – it is strongly recommended that you use the distributed release kit (`.exe` for Windows, `.rpm` for Linux), especially if this is the first time you install Firebird. The Windows installation executable, the Linux rpm program and the `install.sh` script in the official `.tar.gz` for various Posix platforms all perform some essential setup tasks. Provided you follow the installation instructions correctly, there should be nothing for you to do upon completion but log in and go!

Installing on Windows

The Firebird installer lets you choose between Superserver and Classic/SuperClassic. Each model is fully stable and there is no reason to categorically prefer one to the other. Of course you may have your own specific considerations. When in doubt, consult the [Classic](#), [SuperClassic](#) or [Superserver](#) chapter again.

If you install Firebird under Windows 95/98/ME, **un**check the option to install the Control Panel applet. It doesn't work on these platforms. You'll find a link to a usable applet further down. (Note: the option to install the applet is only available for Superserver.)

On Windows server platforms – NT, 2000/3/8, XP, Vista and 7 – Firebird will run as a system service by default, but during the installation you can also choose to let it run as an application. Non-server Windows systems – 95, 98 and ME – don't support services; running as an application is the only option there.

Use the Guardian?

The Firebird Guardian is a utility that monitors the server process and tries to restart it if it terminates abnormally. The Guardian does not work with Firebird Classic Server on Windows if run as an application. This is due to a known bug, which may be fixed later. Currently the Firebird 2.5 installer doesn't give you the option to include the Guardian *at all* with a Classic Server, even if you install it as a service.

The Guardian works correctly with Superserver, whether run as an application or as a service.

If you run Firebird *as a service* on Windows 2000 or newer, the Guardian is a convenience rather than a necessity, since these operating systems have the facility to watch and restart services. It is recommended that you keep the Guardian option on (if possible) in all other situations.

Installing on Linux and other Unix-like platforms

In all cases, read the Release Notes that came with your Firebird package (chapter *Installation Notes*, section *Posix Platforms*). There may be significant variations from release to release of any Posix operating system, especially the open source ones. Where possible, the build engineers for each Firebird version have attempted to document any known issues.

If you have a Linux distribution that supports rpm installs, consult the appropriate platform documentation for instructions about using RPM Package Manager. In most distributions you will have the choice of performing the install from a command shell or through a GUI interface.

For Linux distributions that cannot process rpm programs, and for Unix flavours for which no `.rpm` kit is provided, use the `.tar.gz` kit. You will find detailed instructions in the Release Notes.

Shell scripts have been provided. In some cases, the Release Notes may instruct you to edit the scripts and make some manual adjustments.

Installing multiple servers

Firebird allows the operation of multiple servers on a single machine. It can also run concurrently with Firebird 1.x or InterBase servers. Setting this up is not a beginner's task though. If you need to run multiple servers, consult the *Installation Notes* chapter of the Release Notes, and have the Firebird 1.5 Release Notes handy too – you will be directed to them at a certain point during your reading of the Installation Notes.

Testing your installation

If everything works as designed, the Firebird server process will be running on your server machine upon completion of the installation. It will also start up automatically whenever you restart your computer.

Before testing the Firebird server itself, it is advisable to verify if the server machine is reachable from the client at all. At this point, it is assumed that you will use the recommended TCP/IP network protocol for your Firebird client/server connections.

Notes

- If you have installed a Classic/SuperClassic Server on Linux/Unix or any Firebird server on Windows, it is possible to connect directly to the local server, without using a network layer. If you intend to use Firebird for this type of connection **only**, you can skip the “Pinging the server” section below.
- For information about using the NetBEUI protocol in an all-Windows environment, refer to the *Network Configuration* chapter in the *Using Firebird* manual sold by IBPhoenix, or consult the InterBase 6 Operations Guide (<http://www.ibphoenix.com/files/60OpGuide.zip>).
- Firebird does not support IPX/SPX networks.

Pinging the server

The **ping** command – available on most systems – is a quick and easy way to see if you can connect to a server machine via the network. For example, if your server's IP address in the domain that is visible to your client is 192.13.14.1, go to a command shell on the client machine and type the command

```
ping 192.13.14.1
```

substituting this example IP address with the IP address that your server is broadcasting. If you are on a managed network and you don't know the server's IP address, ask your system administrator. Of course you can also ping the server by its name, if you know it:

```
ping vercingetorix
```

If you are connecting to the server from a local client – that is, a client running on the same machine as the server – you can ping the virtual TCP/IP loopback server:

```
ping localhost –or– ping 127.0.0.1
```

If you have a simple network of two machines linked by a crossover cable, you can set up your server with any IP address you like except 127.0.0.1 (which is reserved for a local loopback server) and, of course, the IP address which you are using for your client machine. If you know the “native” IP addresses of your network cards, and they are different, you can simply use those.

Once you have verified that the server machine is reachable from the client, you can go on to the next step.

Checking that the Firebird server is running

After installation, Firebird server should be running:

On Linux or other Unix-like systems:

As a service.

On Windows server systems (NT, 2000/3/8, XP, Vista, 7):

As a service or as an application. Service is default and highly recommended.

On Windows non-server systems (95, 98, ME):

As an application.

The following sections show you how to test the server in each of these situations.

Server check: Linux and other Unices

Use the **top** command in a command shell to inspect the running processes interactively. If a Firebird Superserver is running, you should see a process named `fbguard`. This is the Guardian process. Further, there will be one main and zero or more child processes named `fbserver`.

The following screen shows the output of `top`, restricted by `grep` to show only lines containing the characters `fb`:

```
frodo:/inkomend/firebird # top -b -n1 | grep fb
 2587 firebird  24   0 1232 1232 1028 S  0.0  0.3   0:00.00 fbguard
 2588 firebird  15   0 4124 4120 2092 S  0.0  0.9   0:00.04 fbserver
 2589 firebird  15   0 4124 4120 2092 S  0.0  0.9   0:00.00 fbserver
 2604 firebird  15   0 4124 4120 2092 S  0.0  0.9   0:00.00 fbserver
 2605 firebird  15   0 4124 4120 2092 S  0.0  0.9   0:00.02 fbserver
 2606 firebird  15   0 4124 4120 2092 S  0.0  0.9   0:00.00 fbserver
 2607 firebird  15   0 4124 4120 2092 S  0.0  0.9   0:00.00 fbserver
```

As an alternative to `top`, you can use `ps -ax` or `ps -aux` and pipe the output to `grep`.

For Classic Server, the process name is `fb_inet_server`. There will be one instance of this process running for each network connection. Note that if there are no active connections, or if there are only direct local connections, you won't find `fb_inet_server` in the process list. `fb_lock_mgr` should be present though as soon as any kind of Classic connection has been established.

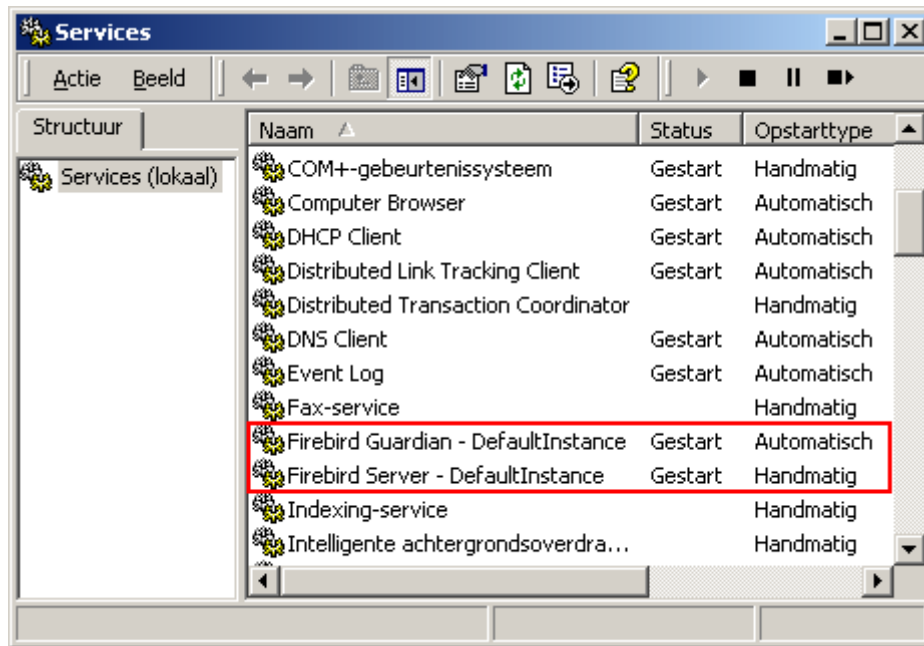
For SuperClassic, the process name is `fb_smp_server` and it will be visible as soon as the service is started. SuperClassic, just like Superserver, does its own port-listening, so it will be running even if there are no connections.

Other ways to test a Firebird server immediately after installation include connecting to a database, creating a database, and launching the `gsec` utility. All these operations are described later on in this guide.

Server check: Windows, running as service

Open Control Panel -> Services (NT) or Control Panel -> Administrative Tools -> Services (2000/3/8, XP, Vista, 7).

This illustration shows the Services applet display on Windows 2000. The appearance may vary from one Windows server edition to another. Also, service names may vary with the Firebird version.



You should at least find the Firebird server in the services listing. The Guardian may or may not be running, depending on the choices you made during installation.

Server check: Windows, running as application

If Firebird is up and running as an application, it is represented by an icon in the system tray:

- A green and grey server symbol if controlled by the Guardian;
- A round yellow and black graphic if running standalone.

A flashing icon indicates that the server is in the process of starting up (or at least trying to do so). A red icon, or an icon with an overlying red stop sign, indicates that startup has failed.

One way to make 100% sure if the server is running or not is to press Ctrl-Alt-Del and look for the `fbserver` or `fb_inet_server` process (and possibly `fbguard`) in the task list.

On some occasions, you may need to start the Guardian or server once explicitly via the Start menu even if you opted for “Start Firebird now” at the end of the installation process. Sometimes a reboot is necessary.

If you're desperately trying to start Firebird and nothing seems to work, ask yourself if you've installed Firebird 2.5 (Super)Classic server with the Guardian option enabled (the installation program doesn't offer this possibility anymore, but there are other ways). As said before, the combination (Super)Classic + Guardian currently doesn't work if Firebird runs as an application. Uninstall Firebird if necessary and reinstall (Super)Classic *without* Guardian, or Superserver with or without Guardian.

You can shut the server down via the menu that appears if you right-click on the tray icon. Notice that this also makes the icon disappear; you can restart Firebird via the Start menu.

Note

Windows Classic Server (but not SuperClassic!) launches a new process for every connection, so the number of `fb_inet_server` processes will always equal the number of client connections plus one. Shutdown via the tray icon menu only terminates the first process (the *listener*). Other processes, if present, will continue to function normally, each terminating when the client disconnects from the database. Of course, once the listener has been shut down, new connections can't be made.

In the case of Superserver you can also use a Control Panel applet to check and alter the Firebird server status. Some available applets will be presented a little later in this guide.

Performing a client-only install

Each remote client machine needs to have the client library – `libfbclient.so` on Posix clients, `fbclient.dll` on Windows clients – that matches the release version of the Firebird server.

Firebird versions from 1.5 onward can install symlinks or copies named after the 1.0 libs (with the “old” InterBase names), to maintain compatibility with third-party products which need these files.

Some extra pieces are also needed for the client-only install.

Windows

At present, no separate installation program is available to install only the client pieces on a Windows machine. If you are in the common situation of running Windows clients to a Linux or other Unix-like Firebird server (or another Windows machine), you need to download the full Windows installation kit that corresponds to the version of Firebird server you install on your server machine.

Fortunately, once you have the kit, the Windows client-only install is easy to do. Just run the installation program, and when you arrive at the “Select Components” screen, choose one of the client-only options from the drop-down list or uncheck the “Server Components” checkbox.

Linux and some other Posix clients

A small-footprint client install program for Linux clients is not available either. Additionally, some Posix flavours – even within the Linux constellation – have somewhat idiosyncratic requirements for filesystem locations. For these reasons, not all *x distributions for Firebird even contain a client-only install option.

For most Linux flavours, the following procedure is suggested for a Firebird client-only install. Log in as `root` for this.

1. Look for `libfbclient.so.2.5.n` (n being the patch version number) in `/opt/firebird/lib` on the machine where the Firebird server is installed. Copy it to `/usr/lib` on the client (or `/usr/lib64` if both server and client are 64-bits).
2. Create chained symlinks using the following commands:

```
ln -s /usr/lib/libfbclient.so.2.5.n /usr/lib/libfbclient.so.2
```

```
ln -s /usr/lib/libfbclient.so.2 /usr/lib/libfbclient.so
```

...replacing `2.5.n` with your version number, e.g. `2.5.0` or `2.5.3`

If you're running applications that expect the legacy libraries to be present, also create the following symlinks:

```
ln -s /usr/lib/libfbclient.so /usr/lib/libgds.so.0
```

```
ln -s /usr/lib/libfbclient.so /usr/lib/libgds.so
```

3. Copy `firebird.msg` to the client machine, preferably into the `/opt/firebird` directory. If you place it somewhere else, create a system-wide permanent `FIREBIRD` environment variable pointing to the right directory, so that the API routines can locate the messages.
4. Optionally copy some of the Firebird command-line tools – e.g. `isql` – to the client machine. *Note:* always copy the tools from a Superserver kit, regardless of the architecture of the server(s) you're planning to connect to. Tools from Classic distributions terminate immediately if they can't find the `libfbembed` library (which is useless for network connections) upon program start.

Instead of copying the files from a server, you can also pull them out of a Firebird `tar.gz` kit. Everything you need is located in the `/opt/firebird` tree within the `buildroot.tar.gz` archive that's packed inside the kit.

Server configuration and management

There are several things you should be aware of – and take care of – before you start using your freshly installed Firebird server. This part of the manual introduces you to some useful tools and shows you how to protect your server and databases.

User management: *gsec*

Firebird comes with a command-line user management tool called *gsec*. Although its functions can also be performed by a number of third-party GUI utilities, you should at least have a basic knowledge of *gsec*, since this is the official tool and it's present in every Firebird server installation. In the next sections you will use *gsec* to execute three tasks: changing the SYSDBA password, adding Firebird users and (optionally) appointing co-administrators. First though, some points of attention:

Permission to run gsec

With some Firebird installations, you can only run *gsec* if you are logged into the operating system as Superuser (`root` on Linux) or as the user the Firebird server process runs under. On Windows server platforms, you typically need to be in the Power User group or higher to run *gsec* successfully.

Trouble running gsec

If you have enough privileges but invoking *gsec* results in a message like “cannot attach to password database - unable to open database”:

- You may be running Firebird on Windows and for some reason the local protocol isn't working. One rather common cause for this is running Windows with Terminal Services (Remote Desktop Services) enabled and connecting to the server from a different session. To enable the local protocol, open `firebird.conf`, uncomment the `IpcName` parameter and set it to `Global\FIREBIRD`. Then restart the server.

Note

In Firebird 2.0.1 and up, Firebird automatically prepends `Global\` to the `IPCName` if the connection fails because of insufficient permissions, so this should not happen anymore.

- If the above doesn't apply to you, you can at least circumvent the problem by “tricking” *gsec* into using TCP/IP. Add the following parameter to the command line, adjusting the path if necessary:

`-database "localhost:C:\Program Files\Firebird\Firebird_2_5\security2.fdb"`

The file `security2.fdb` is the *security database*, where Firebird keeps its user account details. It is located in your Firebird installation directory.

- Maybe your security database is a renamed `security.fdb` from Firebird 1.5 or earlier. Of course this can't be the case immediately after installation. Someone (you?) must have put it there, in order to keep the existing accounts available. Consult the Release Notes for instructions on how to upgrade old security databases.

If the error message starts with “Cannot attach to services manager”, the server may not be running at all. In that case, go back to *Testing your installation* and fix the problem.

Invoking `gsec` on Linux

On *nix systems, if you call `gsec` from its own directory, you should type `./gsec` instead of just `gsec`. The current directory is usually not part of the search path, so plain `gsec` may either fail or launch a “wrong” `gsec`.

Changing the SYSDBA password

One Firebird account is created automatically as part of the installation process: SYSDBA. This account has all the privileges on the server and cannot be deleted. Depending on version, OS, and architecture, the installation program will either

- install the SYSDBA user with the password `masterkey` (actually, `masterke`: characters after the eighth are ignored), or
- ask you to enter a password during installation, or
- generate a random password and store that in the file `SYSDBA.password` within your Firebird installation directory.

If the password is `masterkey` and your server is exposed to the Internet *at all* – or even to a local network, unless you trust every user with the SYSDBA password – you should change it immediately using the `gsec` command-line utility. Go to a command shell, `cd` to the Firebird `bin` subdirectory and issue the following command to change the password to (as an example) `icuryy4me`:

```
gsec -user sysdba -pass masterkey -mo sysdba -pw icuryy4me
```

Notice that you specify “sysdba” twice in the command:

- With the `-user` parameter you identify yourself as SYSDBA. You also provide SYSDBA's current password in the `-pass` parameter.
- The `-mo[diffy]` parameter tells `gsec` that you want to modify an account – which happens to be SYSDBA again. Lastly, `-pw` specifies the type of modification: the password.

If all has gone well, the new password `icuryy4me` is now encrypted and stored, and `masterkey` is no longer valid. Please be aware that unlike Firebird user names, passwords are case-sensitive.

Adding Firebird user accounts

Firebird allows the creation of many different user accounts. Each of them can own databases and also have various types of access to databases and database objects it doesn't own.

Using `gsec`, you can add a user account as follows from the command line in the Firebird `bin` subdirectory:

gsec -user sysdba -pass masterkey -add billyboy -pw sekret66

Provided that you've supplied the correct password for SYSDBA, a user account called `billyboy` will now have been created with password `sekret66`. Remember that passwords are case-sensitive.

Firebird 2.5 also introduces SQL commands for user management. While attached to any database, SYSDBA (or co-admins, see below) can create, alter and drop users like this:

```
create user sonny password 'cher_ie'  
alter user sonny password '9hgf72354b'  
drop user sonny
```

Other parameters for CREATE/ALTER USER are FIRSTNAME, MIDDLENAME and LASTNAME. Like PASSWORD, they all take a string argument.

Ordinary Firebird users can alter their own account details with gsec (“**gsec -user toby -pass hEltoPay -mo toby -pw purgaToby**”) and with SQL (“alter user toby password 'purgaToby'”). Only the account name itself can never be changed, not even by SYSDBA.

Appointing co-administrators

Note: What follows here is not essential knowledge for beginners. You can skip it if you like and go on to the [Security](#) section.

In Firebird 2.5 and up, SYSDBA (and others with administrator rights) can appoint co-administrators. In gsec this is done by adding the `-admin` parameter:

gsec -user sysdba -pass masterkey -add bigbill -pw bigsekrit -admin yes

gsec -user sysdba -pass masterkey -mo littlejohn -admin yes

The first command creates user `bigbill` as a Firebird administrator, who can add, alter and drop users. The second command grants administrator privileges to the existing user `littlejohn`.

The SQL equivalents of these commands are:

```
create user bigbill password 'bigsekrit' grant admin role  
alter user littlejohn grant admin role
```

To revoke administrator privileges with gsec, use `-admin no`. In SQL, use REVOKE ADMIN ROLE.

Notes

- GRANT ADMIN ROLE and REVOKE ADMIN ROLE are not GRANT and REVOKE statements, although they look that way. They are parameters to the CREATE and ALTER USER statements. The actual role name involved here is RDB\$ADMIN. This role also exists in regular databases; more about that in a minute.
- Every user who has received administrator rights can pass them on to others. Therefore, there is no explicit WITH ADMIN OPTION.

Differences between co-administrators and SYSDBA

- Co-admins can create, alter and drop users, but they have no automatic privileges in regular databases, like SYSDBA has.

- Unlike SYSDBA, co-admins must specify the extra parameter `-role rdb$admin` every time they invoke `gsec` to add, modify, drop or view users.
- Co-admins who want to use the SQL user management commands must specify the RDB\$ADMIN role when connecting. However, since nobody can connect to the security database, this requires a little trickery. First, the co-admin has to be granted the RDB\$ADMIN role in at least one regular database as well. This is done in the usual way:

```
grant rdb$admin to bigbill
```

Grantors can be the database owner, SYSDBA, and every other user who has the RDB\$ADMIN role in that database and has specified it while connecting. Every RDB\$ADMIN member in a database can pass the role on to others, so again there is no WITH ADMIN OPTION. Once the co-admin has obtained the role, he can connect to the (regular) database with it and use the SQL user management commands. It's not the most elegant of solutions, but that's how it works.

Please remember:

The RDB\$ADMIN role in a database gives the grantee SYSDBA rights *in that database only!*

- If it is the security database, the grantee can manage user accounts, but has no special privileges in other databases.
- If it is a regular database, the grantee can control that database like he was SYSDBA, but again has no special privileges in other databases, and has no user administration privileges.

Of course it is possible to grant a user the RDB\$ADMIN role in several databases, including the security database.

Security

Firebird 2.5 offers a number of security options, designed to make unauthorised access as difficult as possible. Be warned however that some configurable security features default to the old, “insecure” behaviour inherited from InterBase and Firebird 1.0, in order not to break existing applications.

It pays to familiarise yourself with Firebird's security-related configuration parameters. You can significantly enhance your system's security if you raise the protection level wherever possible. This is not only a matter of setting parameters, by the way: other measures involve tuning filesystem access permissions, an intelligent user accounts policy, etc.

Below are some guidelines for protecting your Firebird server and databases.

Run Firebird as non-system user

On Unix-like systems, Firebird already runs as user `firebird` by default, not as `root`. On Windows server platforms, you can also run the Firebird service under a designated user account (e.g. `Firebird`). The default practice – running the service as the `LocalSystem` user – poses a security risk if your system is connected to the Internet. Consult `README.instsvc` in the `doc` subdir to learn more about this.

Change SYSDBA's password

As discussed before, if your Firebird server is reachable from the network and the system password is masterkey, change it.

Don't create user databases as SYSDBA

SYSDBA is a very powerful account, with full (destructive) access rights to all your Firebird databases. Its password should be known to a few trusted database administrators only. Therefore, you shouldn't use this

super-account to create and populate regular databases. Instead, generate normal user accounts, and provide their account names and passwords to your users as needed. You can do this with gsec as shown above, or with any third-party Firebird administration tool.

Protect databases on the filesystem level

Anybody who has filesystem-level read access to a database file can copy it, install it on a system under his or her own control, and extract all data from it – including possibly sensitive information. Anybody who has filesystem-level write access to a database file can corrupt it or totally destroy it.

As a rule, only the Firebird server process should have access to the database files. Users don't need, and should not have, access to the files – not even read-only. They query databases via the server, and the server makes sure that users only get the allowed type of access (if at all) to any objects within the database.

An exception to this rule is the Windows Embedded Server, which *requires* that users have proper access rights to the database file itself.

Disable Classic local mode on Linux

Another exception to the above rule is the so-called local or embedded access mode of the Firebird Classic and SuperClassic servers on Linux. Here too, users *must* have proper access rights to the database file itself. They also need read access to the security database `security2.fdb`. If this worries you (and it probably should), reserve filesystem access to the security database (and other databases, while you're at it) to the server process only. Users are then obliged to connect via the network layer. Don't remove the `libfbembed` library from your system, though: it contains the complete server engine used by your Classic or SuperClassic server!

Use database aliases

Database aliases shield the client from physical database locations. Using aliases, a client can e.g. connect to “frodo:zappa” without having to know that the real location is `frodo:/var/firebird/music/underground/mothers_of_invention.fdb`. Aliases also allow you to relocate databases while the clients keep using their existing connection strings.

Aliases are listed in the file `aliases.conf`, in this format on Windows machines:

```
poker = E:\Games\Data\PokerBase.fdb
blackjack.fdb = C:\Firebird\Databases\cardgames\blkjk_2.fdb
```

And on Linux:

```
books = /home/bookworm/database/books.fdb
zappa = /var/firebird/music/underground/mothers_of_invention.fdb
```

Giving the alias an `.fdb` (or any other) extension is fully optional. Of course if you do include it, you must also specify it when you use the alias to connect to the database.

Aliases, once entered and saved, take effect immediately. There is no need to restart the server.

Restrict database access

The `DatabaseAccess` parameter in `firebird.conf` can be set to `Restrict` to limit access to explicitly listed filesystem trees, or even to `None` to allow access to aliased databases only. Default is `All`, i.e. no restrictions.

Note that this is not the same thing as the filesystem-level access protection discussed earlier: when `DatabaseAccess` is anything other than `All`, the server will refuse to open any databases outside the defined scope even if it has sufficient rights on the database files.

Choose your authentication model

Firebird supports three authentication models when connecting to databases or using the tools:

1. *Native*: The user must identify him/herself with a Firebird username and password, which the server checks against the security database.
2. *Trusted*: The user is automatically identified by his OS account name.
3. *Mixed*: The user either supplies a Firebird username and password, or is logged in with his OS account name.

On Linux, the mixed model is in effect. On Windows, native authentication is the default, but you can change it to trusted or mixed by setting the *Authentication* parameter in `firebird.conf`.

Depending on your Windows system configuration and the way Firebird is used, *trusted* may be the most secure option.

Consider whether Windows administrators should have SYSDBA rights

In Firebird 2.1, if *Authentication* was *trusted* or *mixed*, Windows administrators would automatically receive SYSDBA privileges in all databases, including the security database. In Firebird 2.5, this is no longer the case. This reduces the risk that administrators with little or no Firebird knowledge mess up databases or user accounts.

If you want to give individual administrators SYSDBA power in the security database and/or regular databases, you can grant them the RDB\$ADMIN role as described in the section [Appointing co-administrators](#). If, on the other hand, you want to restore the automatic SYSDBA mapping as it was in Firebird 2.1, read the following instructions.

To give all the administrators automatic SYSDBA rights in the security database so they can manage Firebird user accounts, give the command:

```
gsec -user sysdba -pass masterkey -mapping set
```

You must do this as SYSDBA - a co-admin account won't do. To reverse the command, use *-mapping drop*.

To give all the administrators SYSDBA rights in an ordinary database, log into the database as the owner, SYSDBA or someone who has the RDB\$ADMIN role in that database, and issue the following SQL statement:

```
alter role rdb$admin set auto admin mapping
```

You must repeat this in every database where you want Windows administrators to have automatic SYSDBA rights. To turn the mapping off again, use DROP instead of SET.

If automatic mapping is on, Windows administrators must *not* specify the RDB\$ADMIN role when invoking gsec or connecting to a database – at least not if they want to make use of their SYSDBA rights. If they specify *any* role at all – even an unexisting one – the automatic mapping will not work.

There are more security parameters, but the ones not mentioned here are already set to an adequate protection level by default. You can read about them in the 1.5 through 2.5 Release Notes and in the comments in `firebird.conf` itself.

Windows Control Panel applets

Several control panel applets are available for use with Firebird. Whilst such applets are not essential, they do provide a convenient way to start and stop the server and check its current status.

Firebird Server Manager

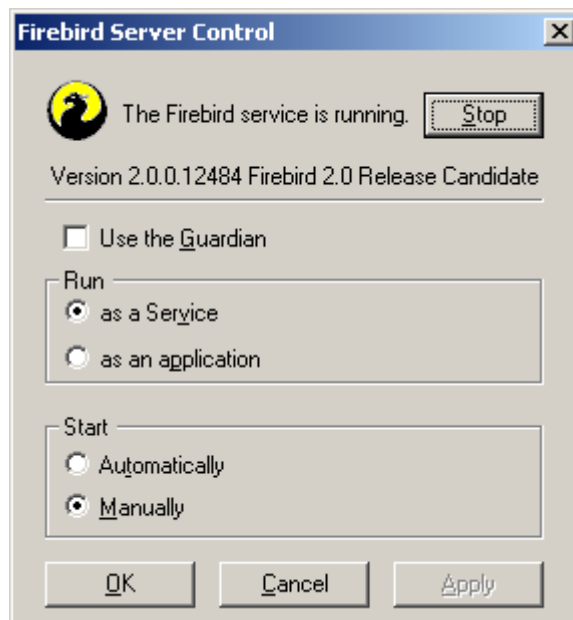
The Firebird Server Manager applet is included in the Firebird distribution. The option to install this applet is only available for Superserver.

Note

The applet is also usable for (Super)Classic, provided that Firebird runs as a service, not as an application. Since the installation dialogue won't give you the option to include the applet with a Classic server, you must, if you really want it:

- install Superserver first;
- copy the applet `Firebird2Control.cpl` from the Windows system folder to a safe place;
- uninstall Superserver;
- install Classic;
- copy the applet back to the system directory.

This is a screenshot of the activated applet. Notice that the title bar says “Firebird Server Control”, although it is listed in the Control Panel as *Firebird Server Manager*.



This applet only works on Windows NT, 2000/3/8, XP, Vista and 7.

Firebird Control Center

For an alternative to the bundled applet, you can visit this webpage:

<http://www.achim-kalwa.de/fbcc.phtml>

...and download the Firebird Control Center (FBCC). Please note that, unlike the applet included with Firebird, the Firebird Control Center will *not* work with Classic or SuperClassic servers. This may change in the future.

The current version – 0.4.2 – should work well under Windows 2000 and up. It offers the same functionality as Firebird's own applet, and more. An older release, still downloadable at <http://www.achim-kalwa.de/dl/fbcc-0.2.7.exe>, also runs under Windows 9x, ME and NT. Notice however that these Windows versions are no longer actively supported by the Firebird project, even if the engine runs on it.

Administration tools

The Firebird kit does not come with a GUI admin tool. It does have a set of command-line tools – executable programs which are located in the `bin` subdirectory of your Firebird installation. One of them, `gsec`, has already been introduced to you.

The range of excellent GUI tools available for use with a Windows client machine is too numerous to describe here. A few GUI tools written in Borland Kylix, for use on Linux client machines, are also in various stages of completion.

Explore the [Download > Tools > Administration page](http://www.ibphoenix.com) at <http://www.ibphoenix.com> for all of the options.

Note

Remember: you can use a Windows client to access a Linux server and vice-versa.

Working with databases

In this part of the manual you will learn:

- how to connect to an existing database,
- how to create a database,
- and some things you should know about Firebird SQL.

In as much as remote connections are involved, we will use the recommended TCP/IP protocol.

Connection strings

If you want to connect to a database or create one you have to supply, amongst other things, a *connection string* to the client application (or, if you are a programmer, to the routines you are calling). A connection string uniquely identifies the location of the database on your computer, local network, or even the Internet.

Local connection strings

An explicit local connection string consists of the path + filename specification in the native format of the filesystem used on the server machine, for example

- on a Linux or other Unix-like server:

```
/opt/firebird/examples/empbuild/employee.fdb
```

- on a Windows server:

```
C:\Biology\Data\Primates\Apes\populations.fdb
```

Many clients also allow relative path strings (e.g. “..\examples\empbuild\employee.fdb”) but you should use them with caution, as it's not always obvious how they will be expanded. Getting an error message is annoying enough, but applying changes to another database than you thought you were connected to may be disastrous.

Instead of a file path, the local connection string may also be a *database alias* that is defined in `aliases.conf`, as mentioned earlier. The format of the alias depends only on how it's defined in the aliases file, not on the server filesystem. Examples are:

- zappa
- blackjack.fdb
- poker

Tip

If your local connections fail, it may be because the local protocol isn't working properly on your machine. If you're running Windows Vista, 2003 or XP with terminal services enabled, this can often be fixed by setting `IpcName` to `Global\FIREBIRD` in the configuration file `firebird.conf` (don't forget to uncomment the parameter and restart the server).

If setting `IpcName` doesn't help and you don't get the local protocol enabled, you can always work around the problem by putting “localhost:” before your database paths or aliases, thus turning them into TCP/IP connection strings (discussed below).

TCP/IP connection strings

A TCP/IP connection string consists of:

1. a server name or IP address
2. a colon (“:”)
3. either the absolute path + filename on the server machine, or an alias defined on the server machine.

Examples:

- On Linux/Unix:

```
pongo:/opt/firebird/examples/empbuild/employee.fdb
```

```
bongo:fury
```

```
112.179.0.1:/var/Firebird/databases/butterflies.fdb
```

```
localhost:blackjack.fdb
```

- On Windows:

```
siamang:C:\Biology\Data\Primates\Apes\populations.fdb  
  
sofa:D:\Misc\Friends\Rich\Lenders.fdb  
  
127.0.0.1:Borrowers
```

Notice how the aliased connection strings don't give any clue about the server OS. And they don't have to, either: you talk to a Linux Firebird server just like you talk to a Windows Firebird server. In fact, specifying an explicit database path is one of the rare occasions where you have to be aware of the difference.

Third-party programs

Please note that some third-party client programs may have different requirements for the composition of connection strings. Refer to their documentation or online help to find out.

Connecting to an existing database

A sample database named `employee.fdb` is located in the `examples/empbuild` subdirectory of your Firebird installation. You can use this database to “try your wings”.

If you move or copy the sample database, be sure to place it on a hard disk that is physically attached to your server machine. Shares, mapped drives or (on Unix) mounted SMB (Samba) filesystems will not work. The same rule applies to any databases that you create or use.

Connecting to a Firebird database requires the user to authenticate with a user name and a valid password. In order to work with objects inside the database – such as tables, views, etc. – you also need explicit permissions on those objects, unless you own them (you own an object if you have created it) or if you're connected as SYSDBA. In the example database `employee.fdb`, sufficient permissions have been granted to PUBLIC (i.e. anybody who cares to connect) to enable you to view and modify data to your heart's content.

For simplicity here, we will look at authenticating as SYSDBA using the password `masterkey`. Also, to keep the lines in the examples from running off the right edge, we will work with local databases and use relative paths. Of course everything you'll learn in these sections can also be applied to remote databases, simply by supplying a full TCP/IP connection string.

Connecting with isql

Firebird ships with a text-mode client named `isql` (Interactive SQL utility). You can use it in several ways to connect to a database. One of them, shown below, is to start it in interactive mode. Go to the `bin` subdirectory of your Firebird installation and type **isql** (Windows) or **./isql** (Linux) at the command prompt.

[In the following examples, # means “hit **Enter**”]

```
C:\Program Files\Firebird\Firebird_2_5\bin>isql#  
Use CONNECT or CREATE DATABASE to specify a database  
SQL>CONNECT ..\examples\empbuild\employee.fdb user SYSDBA password masterkey;#
```

Important

- In isql, every SQL statement must end with a semicolon. If you hit **Enter** and the line doesn't end with a semicolon, isql assumes that the statement continues on the next line and the prompt will change from SQL> to CON>. This enables you to split long statements over multiple lines. If you hit **Enter** after your statement and you've forgotten the semicolon, just type it after the CON> prompt on the next line and press **Enter** again.
- If you run a (Super)Classic Server on Linux, a fast, direct local connection is attempted if the database path does not start with a hostname. This may fail if your Linux login doesn't have sufficient access rights to the database file. In that case, connect to localhost:<path>. Then the server process (usually running as user firebird) will open the file. On the other hand, network-style connections may fail if a user created the database in Classic local mode and the server doesn't have enough access rights.

Note

You can optionally enclose the path, the user name and/or the password in single (') or double (") quotes. If the path contains spaces, quoting is mandatory.

At this point, isql will inform you that you are connected:

```
Database:  ..\examples\empbuild\employee.fdb, User: sysdba
SQL>
```

You can now continue to play about with the employee.fdb database. With isql you can query data, get information about the metadata, create database objects, run data definition scripts and much more.

To get back to the command prompt, type:

```
SQL>QUIT;#
```

You can also type EXIT instead of QUIT, the difference being that EXIT will first commit any open transactions, making your modifications permanent.

Connecting with a GUI client

GUI client tools usually take charge of composing the CONNECT string for you, using server, path (or alias), user name and password information that you type into prompting fields. Use the elements as described in the preceding topic.

Notes

- It is quite common for such tools to expect the entire server + path/alias as a single connection string – just like isql does.
- Remember that file names and commands on Linux and other “Unix-ish” platforms are case-sensitive.

Creating a database using isql

There is more than one way to create a database with isql. Here, we will look at one simple way to create a database interactively – although, for your serious database definition work, you should create and maintain your metadata objects using data definition scripts.

Starting isql

To create a database interactively using the isql command shell, get to a command prompt in Firebird's bin subdirectory and type **isql** (Windows) or **./isql** (Linux):

[In the following examples, # means “hit **Enter**”]

```
C:\Program Files\Firebird\Firebird_2_5\bin>isql#  
Use CONNECT or CREATE DATABASE to specify a database
```

The CREATE DATABASE statement

Now you can create your new database interactively. Let's suppose that you want to create a database named `test.fdb` and store it in a directory named `data` on your D drive:

```
SQL>CREATE DATABASE 'D:\data\test.fdb' page_size 8192#  
CON>user 'SYSDBA' password 'masterkey';#
```

Important

- In the CREATE DATABASE statement it is *mandatory* to place quote characters (single or double) around path, username and password. This is different from the CONNECT statement.
- If you run a (Super)Classic Server on Linux and you don't start the database path with a hostname, creation of the database file is attempted with your Linux login as the owner. This may or may not be what you want (think of access rights if you want others to be able to connect). If you prepend `localhost:` to the path, the server process (usually running as user `firebird`) will create and own the file.

The database will be created and, after a few moments, the SQL prompt will reappear. You are now connected to the new database and can proceed to create some test objects in it.

But to verify that there really is a database there, let's first type in this query:

```
SQL>SELECT * FROM RDB$RELATIONS;#
```

Although you haven't created any tables yet, the screen will fill up with a large amount of data! This query selects all of the rows in the system table `RDB$RELATIONS`, where Firebird stores the metadata for tables. An “empty” database is not really empty: it contains a number of system tables and other objects. The system tables will grow as you add more user objects to your database.

To get back to the command prompt type `QUIT` or `EXIT`, as explained in the section on connecting.

Firebird SQL

Every database management system has its own idiosyncrasies in the ways it implements SQL. Firebird adheres to the SQL standard more rigorously than most other RDBMSes. Developers migrating from products that are less standards-compliant often wrongly suppose that Firebird is quirky, whereas many of its apparent quirks are not quirky at all.

Division of an integer by an integer

Firebird accords with the SQL standard by truncating the result (quotient) of an integer/integer calculation to the next lower integer. This can have bizarre results unless you are aware of it.

For example, this calculation is correct in SQL:

```
1 / 3 = 0
```

If you are upgrading from an RDBMS which resolves integer/integer division to a float quotient, you will need to alter any affected expressions to use a float or scaled numeric type for either dividend, divisor, or both.

For example, the calculation above could be modified thus in order to produce a non-zero result:

```
1.000 / 3 = 0.333
```

Things to know about strings

String delimiter symbol

Strings in Firebird are delimited by a pair of single quote (apostrophe) symbols: 'I am a string' (ASCII code 39, *not* 96). If you used earlier versions of Firebird's relative, InterBase®, you might recall that double and single quotes were interchangeable as string delimiters. Double quotes cannot be used as string delimiters in Firebird SQL statements.

Apostrophes in strings

If you need to use an apostrophe inside a Firebird string, you can “escape” the apostrophe character by preceding it with another apostrophe.

For example, this string will give an error:

```
'Joe's Emporium'
```

because the parser encounters the apostrophe and interprets the string as 'Joe' followed by some unknown keywords. To make it a legal string, double the apostrophe character:

```
'Joe''s Emporium'
```

Notice that this is TWO single quotes, not one double-quote.

Concatenation of strings

The concatenation symbol in SQL is two “pipe” symbols (ASCII 124, in a pair with no space between). In SQL, the “+” symbol is an arithmetic operator and it will cause an error if you attempt to use it for concatenating strings. The following expression prefixes a character column value with the string “Reported by: ”:

```
'Reported by: ' || LastName
```

Firebird will raise an error if the result of a string concatenation exceeds the maximum (var)char size of 32 Kb. If only the *potential* result – based on variable or field size – is too long you'll get a warning, but the operation will be completed successfully. (In pre-2.0 Firebird, this too would cause an error and halt execution.)

See also the section below, [Expressions involving NULL](#), about concatenating in expressions involving NULL.

Double-quoted identifiers

Before the SQL-92 standard, it was not legal to have object names (identifiers) in a database that duplicated keywords in the language, were case-sensitive or contained spaces. SQL-92 introduced a single new standard to make any of them legal, provided that the identifiers were defined within pairs of double-quote symbols (ASCII 34) and were always referred to using double-quote delimiters.

The purpose of this “gift” was to make it easier to migrate metadata from non-standard RDBMSes to standards-compliant ones. The down-side is that, if you choose to define an identifier in double quotes, its case-sensitivity and the enforced double-quoting will remain mandatory.

Firebird does permit a slight relaxation under a very limited set of conditions. If the identifier which was defined in double-quotes:

1. was defined as all upper-case,
2. is not a keyword, and
3. does not contain any spaces,

...then it can be used in SQL unquoted and case-insensitively. (But as soon as you put double-quotes around it, you must match the case again!)

Warning

Don't get too smart with this! For instance, if you have tables "TESTTABLE" and "TestTable", both defined within double-quotes, and you issue the command:

```
SQL>select * from TestTable;
```

...you will get the records from "TESTTABLE", not "TestTable"!

Unless you have a compelling reason to define quoted identifiers, it is usually recommended that you avoid them. Firebird happily accepts a mix of quoted and unquoted identifiers – so there is no problem including that keyword which you inherited from a legacy database, if you need to.

Warning

Some database admin tools enforce double-quoting of *all* identifiers by default. Try to choose a tool which makes double-quoting optional.

Expressions involving NULL

In SQL, NULL is not a value. It is a condition, or *state*, of a data item, in which its value is unknown. Because it is unknown, NULL cannot behave like a value. When you try to perform arithmetic on NULL, or involve it with values in other expressions, the result of the operation will almost always be NULL. It is not zero or blank or an “empty string” and it does not behave like any of these values.

Below are some examples of the types of surprises you will get if you try to perform calculations and comparisons with NULL.

The following expressions all return NULL:

- `1 + 2 + 3 + NULL`
- `not (NULL)`
- `'Home ' || 'sweet ' || NULL`

You might have expected 6 from the first expression and “Home sweet ” from the third, but as we just said, NULL is not like the number 0 or an empty string – it's far more destructive!

The following expression:

- `FirstName || ' ' || LastName`

will return NULL if either `FirstName` or `LastName` is NULL. Otherwise it will nicely concatenate the two names with a space in between – even if any one of the variables is an empty string.

Tip

Think of NULL as UNKNOWN and these strange results suddenly start to make sense! If the value of `Number` is unknown, the outcome of `'1 + 2 + 3 + Number'` is also unknown (and therefore NULL). If the content of `MyString` is unknown, then so is `'MyString || YourString'` (even if `YourString` is non-NULL). Etcetera.

Now let's examine some PSQL (Procedural SQL) examples with `if`-constructs:

- ```
if (a = b) then
 MyVariable = 'Equal';
else
 MyVariable = 'Not equal';
```

After executing this code, `MyVariable` will be `'Not equal'` if both `a` and `b` are NULL. The reason is that `'a = b'` yields NULL if at least one of them is NULL. If the test expression of an “if” statement is NULL, it behaves like false: the `'then'` block is skipped, and the `'else'` block executed.

**Warning**

Although the expression may *behave* like false in this case, it's still NULL. If you try to invert it using `not()`, what you get is another NULL – not “true”.

- ```
if (a <> b) then
  MyVariable = 'Not equal';
else
  MyVariable = 'Equal';
```

Here, `MyVariable` will be `'Equal'` if `a` is NULL and `b` isn't, or vice versa. The explanation is analogous to that of the previous example.

The DISTINCT keyword comes to the rescue!

Firebird 2 and above implement a new use of the `DISTINCT` keyword allowing you to perform (in)equality tests that take NULL into account. The semantics are as follows:

- Two expressions are `DISTINCT` if they have different values or if one is NULL and the other isn't;
- They are `NOT DISTINCT` if they have the same value or if they are both NULL.

Notice that if neither operand is NULL, DISTINCT works exactly like the “<>” operator, and NOT DISTINCT like the “=” operator.

DISTINCT and NOT DISTINCT always return true or false, never NULL.

Using DISTINCT, you can rewrite the first PSQL example as follows:

```
if (a is not distinct from b) then
  MyVariable = 'Equal';
else
  MyVariable = 'Not equal';
```

And the second as:

```
if (a is distinct from b) then
  MyVariable = 'Not equal';
else
  MyVariable = 'Equal';
```

These versions will give you the results that a normal (i.e. not SQL-brainwashed) human being would expect, whether there are NULLS involved or not.

More about NULLS

A lot more information about NULL behaviour can be found in the *Firebird Null Guide*, at these locations:

<http://www.firebirdsql.org/manual/nullguide.html> (HTML)

<http://www.firebirdsql.org/pdfmanual/Firebird-Null-Guide.pdf> (PDF)

Protecting your data

Backup

Firebird comes with two utilities for backing up and restoring your databases: *gbak* and *nbackup*. Both can be found in the `bin` subdirectory of your Firebird installation. Firebird databases can be backed up while users are connected to the system and going about their normal work. The backup will be taken from a snapshot of the database at the time the backup began.

Regular backups and occasional restores should be a scheduled part of your database management activity.

Warning

Except in *nbackup*'s lock mode, do not use external proprietary backup utilities or file-copying tools such as WinZip, tar, copy, xcopy, etc., on a database which is running. Not only will the backup be unreliable, but the disk-level blocking used by these tools can corrupt a running database.

Important

Study the warnings in the next section about database activity during restores!

More information about gbak can be found here (HTML and PDF version, same content):

<http://www.firebirdsql.org/manual/gbak.html>

<http://www.firebirdsql.org/pdfmanual/Firebird-gbak.pdf>

The nbackup manual is here (again same content in HTML and PDF):

<http://www.firebirdsql.org/manual/nbackup.html>

<http://www.firebirdsql.org/pdfmanual/Firebird-nbackup.pdf>

How to corrupt a database

The following sections constitute a summary of things *not* to do if you want to keep your Firebird databases in good health.

Modifying metadata tables yourself

Firebird stores and maintains all of the metadata for its own and your user-defined objects in special tables, called *system tables*, right in the database itself. The identifiers for these system tables, their columns and several other types of system objects begin with the characters RDB\$.

Because these are ordinary database objects, they can be queried and manipulated just like your user-defined objects. However, just because you can does not mean you should. The Firebird engine implements a high-level subset of SQL (DDL) for the purpose of defining and operating on metadata objects, typically through CREATE, ALTER and DROP statements.

It cannot be recommended too strongly that you use DDL – not direct SQL operations on the system tables – whenever you need to alter or remove metadata. Defer the “hot fix” stuff until your skills in SQL and your knowledge of the Firebird engine become very advanced. A wrecked database is neither pretty to behold nor cheap to repair.

Disabling forced writes

Firebird is installed with forced writes (synchronous writes) enabled by default. Mutations are written to disk immediately upon posting.

It is possible to configure a database to use asynchronous data writes – whereby modified or new data are held in the memory cache for periodic flushing to disk by the operating system's I/O subsystem. The common term for this configuration is *forced writes off* (or *disabled*). It is sometimes resorted to in order to improve performance during large batch operations.

Disabling forced writes on Windows

The big warning here is: do *not* disable forced writes on a Windows server. It has been observed that the Windows server platforms do not flush the write cache until the Firebird service is shut down. Apart from power interruptions, there is just too much that can go wrong on a Windows server. If it should hang, the I/O system goes out of reach and your users' work will be lost in the process of rebooting.

Note

Windows 9x and ME do not support deferred data writes.

Disabling forced writes on Linux

Linux servers are safer for running an operation with forced writes disabled temporarily. Still, do not leave it disabled once your large batch task is completed, unless you have a very robust fall-back power system.

Restoring a backup to a running database

One of the restore options in the gbak utility (`gbak -rep[lace_database]`) allows you to restore a gbak file over the top of an existing database. It is possible for this style of restore to proceed without warning while users are logged in to the database. Database corruption is almost certain to be the result.

Note

Notice that the shortest form of this command is `gbak -rep`, not `gbak -r` as it used to be in previous Firebird versions. What happened to `gbak -r`? It is now short for `gbak -recreate_database`, which functions the same as `gbak -c[reate]` and throws an error if the specified database already exists. You can force overwriting of the existing database by adding the `o[verwrite]` flag though. This flag is only supported with `gbak -r`, not with `gbak -c`.

These changes have been made because many users thought that the `-r` switch meant *restore* instead of *replace* – and only found out otherwise when it was too late.

Warning

Be aware that you will need to design your admin tools and procedures to prevent any possibility for any user (including SYSDBA) to restore to your active database if any users are logged in.

If is practicable to do so, it is recommended to restore to spare disk space using the `gbak -c[reate]` option and test the restored database using `isql` or your preferred admin tool. If the restored database is good, shut down the old database (you can use the `gfix` command-line tool for this; see <http://www.firebirdsql.org/manual/gfix.html> or <http://www.firebirdsql.org/pdfmanual/Firebird-gfix.pdf>). Make a filesystem copy of the old database just in case and then copy the restored database file(s) over their existing counterparts.

Allowing users to log in during a restore

If you do not block access to users while performing a restore using `gbak -rep[lace_database]` then users may be able to log in and attempt to do operations on data. Corrupted structures will result.

How to get help

The community of willing helpers around Firebird goes a long way back, to many years before the source code for its ancestor, InterBase® 6, was made open source. Collectively, the Firebird community does have all the

answers! It even includes some people who have been involved with it since it was a design on a drawing board in a bathroom in Boston.

- Visit the official Firebird Project site at <http://www.firebirdsql.org> and join the user support lists, in particular `firebird-support`. Look at <http://www.firebirdsql.org/en/mailling-lists/> for instructions.
- Use the Firebird documentation index at <http://www.firebirdsql.org/en/documentation/>.
- Visit the Firebird knowledge site at <http://www.ibphoenix.com> to look up a vast collection of information about developing with and using Firebird. IBPhoenix also sells a Developer CD with the Firebird binaries and lots of documentation.
- Order the official Firebird Book at http://www.ibphoenix.com/products/books/firebird_book, for more than 1100 pages jam-packed with Firebird information. *[Notice: Currently out of print; Second Edition in the making. First Edition still available through e.g. eBay, Amazon.]*
- As a last resort – since our documentation is still incomplete – you can consult the InterBase 6.0 beta manuals (the files whose names start with 60 at <http://www.ibphoenix.com/downloads/>) in combination with the Firebird 1.5 and 2.x Release Notes.

How to give help

Firebird exists, and continues to be improved, thanks to a community of volunteers who donate their time and skills to bring you this wonderful piece of software. But volunteer work alone is not enough to keep an enterprise-level RDBMS such as Firebird up-to-date. The *Firebird Foundation* supports Firebird development financially by issuing grants to designers and developers. If Firebird is useful to you and you'd like to give something back, please visit the Foundation's pages and consider making a donation or becoming a member or sponsor.

The Firebird Project

The developers, designers and testers who gave you Firebird and several of the drivers are members of the Firebird open source project at SourceForge, that amazing virtual community that is home to thousands of open source software teams. The Firebird project's address there is <http://sourceforge.net/projects/firebird/>. At that site are the source code tree, the download packages and a number of technical files related to the development and testing of the codebases.

The Firebird Project developers and testers use an email list forum – `firebird-devel@lists.sourceforge.net` – as their “virtual laboratory” for communicating with one another about their work on enhancements, bug-fixing and producing new versions of Firebird.

Anyone who is interested in watching their progress can join this forum. However, user support questions are a distraction which they do not welcome. Please do not try to post your user support questions there! These belong in the `firebird-support` group.

Happy Firebirding!

Appendix A: Firebird server architectures

This table gives a more detailed overview of the Firebird server architectures that were introduced in the section *Classic, SuperClassic or Superserver* near the beginning of this guide.

Table A.1. Classic, SuperClassic and Superserver characteristics

	Classic Server	SuperClassic	Superserver
<i>Processes</i>	A listener process (<code>xinetd</code> on Linux, <code>fb_inet_server</code> on Windows) listens to the Firebird port and spawns a separate server process (<code>fb_inet_server</code>) for every client connection.	A single process (<code>fb_smp_server</code>) listens to the Firebird port and serves all connections, using threads to handle requests.	A single process (<code>fbserver</code>) listens to the Firebird port and serves all connections, using threads to handle requests.
<i>Cache</i>	Each server process (= each connection) has its own cache.	Separate cache spaces for each connection.	A shared cache space for all connections.
<i>Local connections (Linux)</i>	Applications can use the <code>libfbembedded</code> library for local connections. This is a client and server rolled into one, permitting fast, direct I/O to database files. The user process must have filesystem-level access rights to the database for this to work. Local connections via the network layer are also possible; in this case, only the server process needs access to the database file.		All local connections are made via the network layer, using <code>localhost</code> (often implicitly). Only the server process needs access to the database file.
<i>Local connections (Windows)</i>	On Windows, all variants support safe and reliable local connections using the <code>XNET</code> protocol, with only the server process requiring access rights to the database file. Direct access in user process space requires a separate package, Windows Embedded Server .		
<i>Simultaneous access by multiple engines</i>	Classic and SuperClassic use a shared lock system. This allows access by multiple servers (e.g. a regular server and one or more embedded servers) at the same time.		Superserver acquires an exclusive lock on the database file. No other processes can access the database during the same time.
<i>Multiprocessor / multi-core</i>	SMP (symmetrical multi-processing) is supported out of the box. The <code>CpuAffinityMask</code> parameter in <code>firebird.conf</code> is ignored. Unlike Superserver, Classic and SuperClassic can also assign multiple connections to the same database to different processors.		Windows Superserver defaults to using the first logical processor only, because prior to 2.5 it performed badly on SMP systems. To make use of all your processors, set the <code>CpuAffinityMask</code> parameter in <code>firebird.conf</code> to: 3 for 2 CPUs/cores; 15 for 4

	Classic Server	SuperClassic	Superserver
			CPUs/cores; 255 for 8 CPUs/cores. Linux Superserver ignores <i>CpuAffinityMask</i> .
<i>Guardian (Linux)</i>	The Guardian isn't used: <i>xinetd</i> listens for incoming connections and creates server instances as needed.	SuperClassic and Superserver are single-process servers, which can be watched over by the Guardian.	
<i>Guardian (Windows)</i>	When run as a Windows <i>application</i> (as opposed to a service), you can't use the Firebird Guardian. Note that running Firebird as an application is the only option on Windows 9x–ME. The Windows installer doesn't offer the Guardian option at all for Classic/SuperClassic.	Can be used with the Guardian on Windows, whether run as an application or as a service.	
<i>Events</i>	As of version 2.5, all models can use Firebird events under all circumstances. If the server is behind a firewall or if connections are made through a secure tunnel, a specific events port has to be assigned to the <i>RemoteAuxPort</i> variable in <i>firebird.conf</i> , and the firewall or tunnel configured accordingly.		

The differences listed above result in the following pros and cons of the various models:

- If a traditional Classic server process crashes, the other connections remain unaffected. If a SuperClassic or Superserver process crashes, all the connections go down with it.
- The Guardian gives some extra reliability because it automatically restarts a crashed server. On Windows, this gives Superserver a little edge, especially if you run Firebird as an application (crashed services can also be restarted by the OS).
- Traditional Classic uses less resources if the number of connections is low. SuperClassic and Superserver are more efficient if the number of simultaneous connections grows.
- The local access mode provided by Classic and SuperClassic on Linux, though very fast, doesn't offer full security. You can disable it (see the [Security](#) chapter), but then you also lose the speed benefit.
- While working with a Windows Embedded application, it may be useful if you can open its database through the regular server at the same time, e.g. for “live” inspection or to make a backup. This is only possible if your regular server is a Classic or SuperClassic.

As you can see, none of the three models is better in all respects. If, after studying the above information, you're still not sure which is best for you, 64-bits SuperClassic may be a good choice—unless you need the additional connection-level robustness of traditional Classic, where a crashing server doesn't take down the other connections. On 32-bits systems, SuperClassic may run out of memory under high load; in this scenario, Superserver and (especially) Classic Server are preferred.

As mentioned earlier in this guide, you can always switch models later. De-installing and installing another server is usually a matter of minutes, and your applications and databases will keep functioning like before. The differences are in the servers only, not in the databases. All Firebird databases have the same architecture and can be accessed by any type of Firebird server.

Appendix B: Document History

The exact file history is recorded in the `manual` module in our CVS tree; see <http://firebird.cvs.sourceforge.net/viewvc/firebird/manual/src/docs/firebirddocs/quickstartguide-2.5.xml?view=log>

Revision History

0.0	2002	IBP	Published as Chapter One of <i>Using Firebird</i> .
1.0	2003	IBP	Published separately as a free Quick Start Guide.
1.x	June 2004	IBP	Donated to Firebird Project by IBPhoenix.
2.0	27 Aug 2004	PV	Upgraded to Firebird 1.5 Added Classic vs. Superserver section. Reorganised and corrected Disk Locations Table. Added (new) screenshots. Added section on security. Updated and completed information on Control Panel applets. Added more examples to “Expressions involving NULL”. Various other corrections and additions.
2.1	20 Feb 2005	PV	Enhanced GSEC section. Added more info to CONNECT and CREATE DATABASE sections. Added version number and document history.
2.1.1	1 Mar 2005	PV	Changed <code>gbak r[estore]</code> to <code>r[eplace]</code> in two places.
2.1.2	8 Apr 2005	PV	Reordered Firebird SQL subsections. Added links to Firebird Null Guide.
2.2	2 Dec 2005	PV	Removed "Using the books by IBPhoenix" as it doesn't make sense in the QSG. Promoted "How to get help" to 1st-level section and removed "Where to next" shell. Removed link to UFB and RefGuide; added a note instead explaining their current status. Updated/corrected classic-super comparison table. Moved a number of sections on installing, working with databases, and (un)safety into newly created top-level sections.
2.2.1	22 Dec 2005	PV	Corrected statement on SS thread usage in Classic-vs-Superserver table. Fixed broken link.
3.0	21 May 2006	PV	Creation of 2.0 Quick Start Guide, still equal to previous revision except for some version numbers, XML ids etc.
3.2	10 Aug 2006	PV	Promoted “Firebird Project members” to co-authors in <code>articleinfo</code> .

Updated references to website (`firebird.sourceforge.net` -> `www.firebirdsql.org`).

Removed “maturity” and “Service Manager” rows from Classic-vs-Super table; these things are no longer different in Firebird 2. Also changed the row on local connections: CS and SS now both allow safe, reliable local connections on Windows. Added row on Guardian. Prepend a column with feature names.

Removed any and all remarks about Classic not having a (full) Service Manager.

Removed 2nd paragraph of “Default disk locations” section.

Removed notes stating that Classic/Win connections will fail without a host name.

Updated location table and inserted rows for documentation.

Edited the Installation sections; added sections on Guardian and installing multiple servers. Removed “if-you-do-not-find-the-release-notes” tip.

Heavily edited and extended the “Testing your installation” sections. The “Other things you need” section is now gone and its contents distributed across other sections.

Added a section on gsec (consisting partly of existing material).

Greatly enhanced and extended the *Security* section, and moved it to another location.

Extended and improved the “Windows Control Panel applets” section.

Edited “Working with databases”. Added a special section on connection strings. Added information on access to database objects, the EXIT statement, and local vs. remote connections. Made some paths in the examples relative, to keep the lines short. Extended paragraph on metadata.

Weakened the claim that Firebird is more SQL-compliant than any other RDBMS.

Changed the “Expressions involving NULL” section. Added a subsection on DISTINCT. Changed “More about NULLs” subsection somewhat.

Renamed “Safety measures” to “Preventing data loss”. The Security subsection has been moved elsewhere.

Extended *Backup* section to include nbackup information. Added links to other documentation.

In the “How to corrupt...” part, changed gbak -r syntax to -rep and added explanatory note.

Added the “IB6 plus rlsnotes” as last-resort option to *How to get help*. Also mentioned firebird-support explicitly.

Corrected more version numbers, paths, and stuff.

Many sections have been reshuffled, moved up or down the hierarchy, etc. Many smaller modifications are not listed here.

Added “Happy Firebirding!” to conclude the last section.

3.3 15 Oct 2006 PV

Default disk locations table: added isql to command line tools; added row for additional server-side libs.

Added introductory paragraph to “Installing Firebird”. Changed first sentence of “Installing on Linux...”

Changed and extended “Server check: Linux and other Unices”.

Corrected and extended the section on Linux client-only installs.

Security section: moved last paragraph of the “Protect databases...” listitem into a new item on Classic local mode.
 Connection strings: improved and extended introductory paragraph; added a subsection on third party program requirements.
 Changed 3rd and 4th paragraph of “Connecting to an existing database”. Used relative paths in connection examples. Updated/corrected note on the use of quote characters.
 Edited first “Important” item in “The CREATE DATABASE statement”.
 Updated the warning about concatenation of long strings.
 Extended the note in “Restoring a backup to a running database”.
 Updated last sentence of first paragraph in “The Firebird Project”.

- | | | | |
|-----|-------------|----|--|
| 3.4 | 25 Jan 2007 | PV | <p><i>About this guide</i>: Changed note about versions and replaced HTML and PDF links with single link to new doc index page.
 <i>Classic or Superserver?</i>: Replaced note on Embedded Server with a proper subsection, containing more info and links to UFB.
 <i>Default disk locations</i>: Created two subsections (for Linux and Windows); also split table in two and removed first column. Introduced placeholders <ProgramDir> and <SystemDir>. Changed text around tables, changed existing note, and added note for Win64 users.
 <i>Security</i>: Removed statement that 1.5 Release Notes are included with 2.x packages.
 <i>More about NULLs</i>: Replaced note about the Null Guide being updated with a para announcing the availability of the new version.
 <i>Backup</i>: Updated information on UFB.
 <i>How to get help</i>: Updated documentation links and changed text here and there.</p> |
| 3.5 | 14 Mar 2007 | PV | <p><i>About this guide</i> and <i>Important notice for 64-bit Windows users</i>: Minor rewordings.
 <i>User management: gsec</i> and <i>Connection strings</i>: Added information on enabling local protocol with <code>IpcName=Global\FIREBIRD</code>.
 <i>Security :: Use database aliases</i>: Changed type from <database> to <literal> to improve output.</p> |
| 3.6 | 21 Sep 2007 | PV | <p><i>About this guide</i>: Mentioned 2.0.3. Warned against 2.0.2.
 <i>Expressions involving NULL</i>: Space added to expected concatenation result: “Home sweet ”.</p> |
| 3.7 | 8 Apr 2008 | PV | <p><i>About this guide</i>: Added 2.0.4 and 2.1 to covered versions. Mentioned forced writes bug.
 <i>Installing the Firebird server :: Use the Guardian?</i>: Added warning about Win installer not detecting existing server.
 <i>How to corrupt a database?</i>: Gave subsections id attributes.
 <i>Disabling forced writes on Windows</i>: Created new parent section <i>Disabling forced writes</i>, with the Windows and Linux cases as subsections. Warned against Linux forced writes bug.
 <i>License notice</i>: Copyright end year now 2008.</p> |
| 3.8 | 18 Jan 2009 | PV | <p><i>About this guide</i>: Added 2.0.5 and 2.1.2 to covered versions.
 <i>Preventing data loss :: Backup</i>: Mentioned nbackup's brokenness in 2.1.</p> |

How to corrupt a database :: Restoring a backup to a running database: Changed and extended instructions re. safe restoring.
How to give help: New section directing reader to the Foundation.
License notice: Copyright end year now 2009.

- | | | | |
|-----|-------------|----|--|
| 3.9 | 4 Sep 2010 | PV | <p><i>About this guide:</i> Added 2.0.6 and 2.1.3 to covered versions.
 <i>Working with databases :: Creating a database using isql :: Starting isql:</i> Added “# means Enter” note, like in <i>Connecting with isql</i>.
 <i>Preventing data loss :: Backup:</i> Mentioned nbackup's still-brokenness in 2.1.1 and complete fix in 2.1.2.
 <i>How to get help:</i> Last list item: changed version ref. 2.0 to 2.x.
 <i>License notice:</i> Copyright end year now 2010.</p> |
| 4.0 | 5 Sep 2010 | PV | <p>Creation of 2.5 Quick Start Guide, still equal to previous revision except for some version numbers, XML ids etc. Also removed erroneous id from primary index term in <i>Document History</i> title.</p> |
| 4.1 | 15 Sep 2010 | PV | <p><i>About this guide:</i> Removed 2.0-specific warnings.
 Upgraded and added information for version 2.5. [Details still to be filled in]</p> |
| 4.2 | 21 Sep 2010 | PV | <p><i>Classic, SuperClassic or Superserver:</i> Moved the table into an appendix and left only a concise overview here so first-time users can make a reasonable choice. Moved the paragraph about installation packages into a separate subsection.
 <i>User management: gsec :: Trouble running gsec:</i> Improved/corrected first listitem.
 <i>Firebird server architectures:</i> New appendix, containing the (slightly edited) table that used to be in the <i>Classic, SuperClassic or Superserver</i> section.</p> |
| 4.3 | 8 Jul 2011 | PV | <p>General: Added IDs to all sections that lacked one.
 <i>About this guide:</i> Changed ulink to Firebird Doc Index.
 New top-level section: <i>The Firebird licenses</i>.
 <i>Classic, SuperClassic or Superserver? :: Multiprocessing:</i> Changed wording.
 <i>Classic, SuperClassic or Superserver?:</i> After differences listing, changed advice from flat-out SuperClassic to SuperClassic on 64-bit and Superserver/Classic on 32-bit systems under high load. Split paragraph into two.
 <i>Classic, SuperClassic or Superserver? :: Installation packages:</i> Added instruction on switching to SuperClassic on Linux.
 <i>What is in the kit?</i> now comes after the <i>Classic, SuperClassic or Superserver</i> section. Itemized list now has compact spacing; words “essential reading” now wrapped in <i>emphasis</i> element instead of written in all-caps.
 <i>Default disk locations :: Linux:</i> Added that default install dir may vary per distribution.
 <i>Installing Firebird :: Testing your installation :: Note:</i> Updated ulink to IB OpGuide (text and url).
 <i>Server configuration and management :: User management: gsec :: Appointing co-administrators :: Differences between co-administrators and SYSDBA:</i> Changed wording of 2nd listitem. Completely rewrote</p> |

and extended 3rd listitem. In Note, changed wording of 2nd listitem slightly.

Server configuration and management :: Security :: Disable Classic local mode on Linux: Took out reference to libfbembedded library.

Server configuration and management :: Windows Control Panel applets :: Firebird Server Manager: Edited last para.

Server configuration and management :: Windows Control Panel applets :: Firebird Control Center: Changed almost entire text.

Server configuration and management :: Administration tools: Updated ulink text and url.

Preventing data loss: Renamed *Protecting your data*.

Protecting your data :: How to corrupt a database :: Disabling forced writes on Linux: Removed obsolete indexterm to Linux Forced Writes bug.

How to get help: Updated ulink to mailing lists page (text and url). Updated ulink to Firebird Doc Index (text and url). Updated link to Firebird Book and added notice about first edition being out of print. Removed Note about *Using Firebird* and *Firebird Reference Guide*.

How to give help: Updated Firebird Foundation url.

The Firebird Project: Added terminating slash to ulink (text and url).

Firebird Server Architectures: In comparison table, added para in Multiprocessor / multicore row for Classic/SuperClassic. Edited final two paragraphs.

Document history: Link to CVS changed, points directly to document log view in manual module now.

License notice: Copyright end year now 2011.

4.4 26 Sep 2011 PV

articleinfo, *About this guide*: Added 2.5.1 to covered versions.

Classic, SuperClassic or Superserver?: Fixed typo in first para: Firebid -> Firebird.

Server configuration and management :: User management: gsec ::

Appointing co-administrators :: Differences between co-administrators and SYSDBA: Slightly changed wording of 2nd listitem.

Server configuration and management :: Administration tools: Inspect -> Explore. In ulink text: Downloads -> Download.

Working with databases :: Firebird SQL :: Expressions involving NULL :: The DISTINCT keyword comes to the rescue!: Wrapped "DISTINCT" in title in database element. Slightly altered wording in 2nd listitem.

Appendix C: License notice

The contents of this Documentation are subject to the Public Documentation License Version 1.0 (the “License”); you may only use this Documentation if you comply with the terms of this License. Copies of the License are available at <http://www.firebirdsql.org/pdfmanual/pdl.pdf> (PDF) and <http://www.firebirdsql.org/manual/pdl.html> (HTML).

The Original Documentation is titled *Firebird Quick Start Guide*.

The Initial Writer of the Original Documentation is: IBPhoenix Editors.

Copyright (C) 2002-2004. All Rights Reserved. Initial Writer contact: hborrie at ibphoenix dot com.

Contributor: Paul Vinkenoog - see [document history](#).

Portions created by Paul Vinkenoog are Copyright (C) 2004-2011. All Rights Reserved. Contributor contact: paul at vinkenoog dot nl.

Alphabetical index

A

- Admin tools, 21
- Administrators, 16, 19
- Aliases, 18, 22, 23
- Apostrophes in strings, 26
- Architectures, 4, 33
- Authentication, 19

B

- Backup, 29
- Books
 - The Firebird Book, 32

C

- Checking the server, 10
- Classic Server, 4, 33
- Configuration, 14
- Connecting, 23
 - CONNECT statement, 23
 - connection strings, 21
- Control Panel applets, 20
- CREATE DATABASE statement, 25

D

- Databases
 - aliases, 18, 22, 23
 - backup and restore, 29, 31, 31
 - connecting, 23
 - with a GUI client, 24
 - with isql, 23
 - corruption, 30
 - creating with isql, 24
 - example database, 23
 - metadata, 25, 30
 - security, 17
 - system tables, 25, 30
 - working with databases, 21
- Disk locations, 6
 - Linux, 6
 - Windows, 7
- Document history, 35
- Documentation, 31
- Double-quoted identifiers, 27

E

- Embedded Server, 5
- Example database, 23

F

- Firebird Book, 32
- Firebird Foundation, 32
- Firebird Guardian, 9
- Firebird licenses, 3
- Firebird project, 32
- Firebird SQL, 25
- Forced writes, 30
 - Linux forced writes bug, 31

G

- gsec, 14
- Guardian, 9, 11

H

- Help, 31, 32

I

- IDPL, 3
- Installation, 8
 - Classic or Superserver, 4
 - client-only, 13
 - drives, 8
 - kit contents, 5
 - script or program, 8
 - server, 8
- Integer division, 26
- IPL, 3
- isql
 - connecting to a database, 23
 - creating a database, 24

L

- License notice, 40
- Licenses, 3

M

- Management, 14

N

- NULL, 27

P

- Passwords
 - changing, 15
- Ping, 10

Project, [32](#)

R

RDB\$ADMIN role

in regular databases, [17](#)

in the security database, [16](#)

Restore, [29](#)

to a running database, [31](#)

user logins during restore, [31](#)

S

Sample database, [23](#)

Security, [17](#)

Server architectures, [4](#), [33](#)

Server name and path, [22](#)

Services (Windows), [11](#)

SQL, [25](#)

CONNECT statement, [23](#)

CREATE DATABASE statement, [25](#)

Strings, [26](#)

apostrophes in strings, [26](#)

concatenation, [26](#)

delimiter symbol, [26](#)

SuperClassic, [4](#), [33](#)

Superserver, [4](#), [33](#)

Support Firebird, [32](#)

SYSDBA, [15](#), [17](#), [17](#)

System tables, [25](#), [30](#)

T

TCP/IP, [22](#)

Testing, [10](#)

top command (Linux), [11](#)

U

User accounts, [15](#)

W

Windows Embedded Server, [5](#)